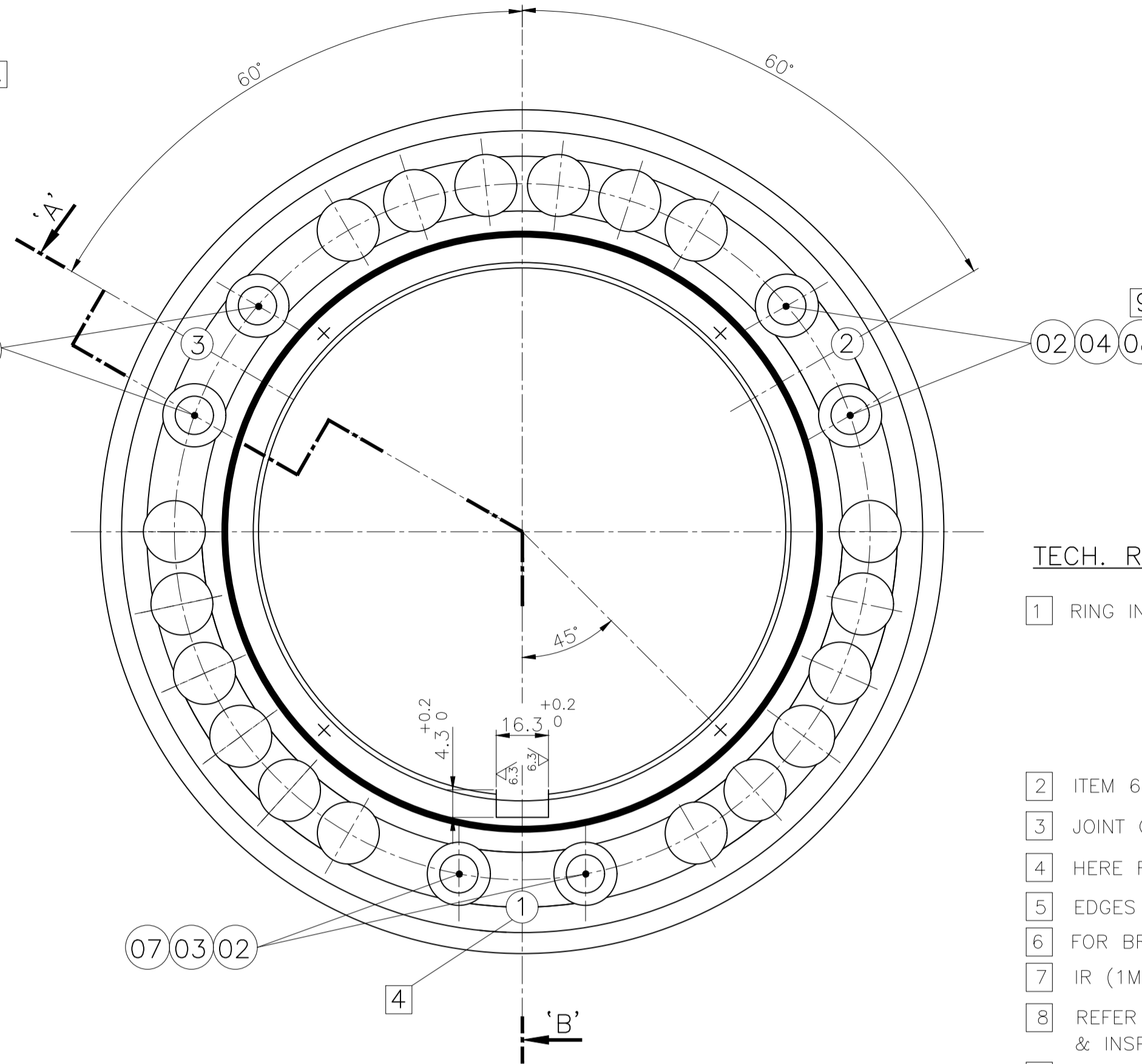
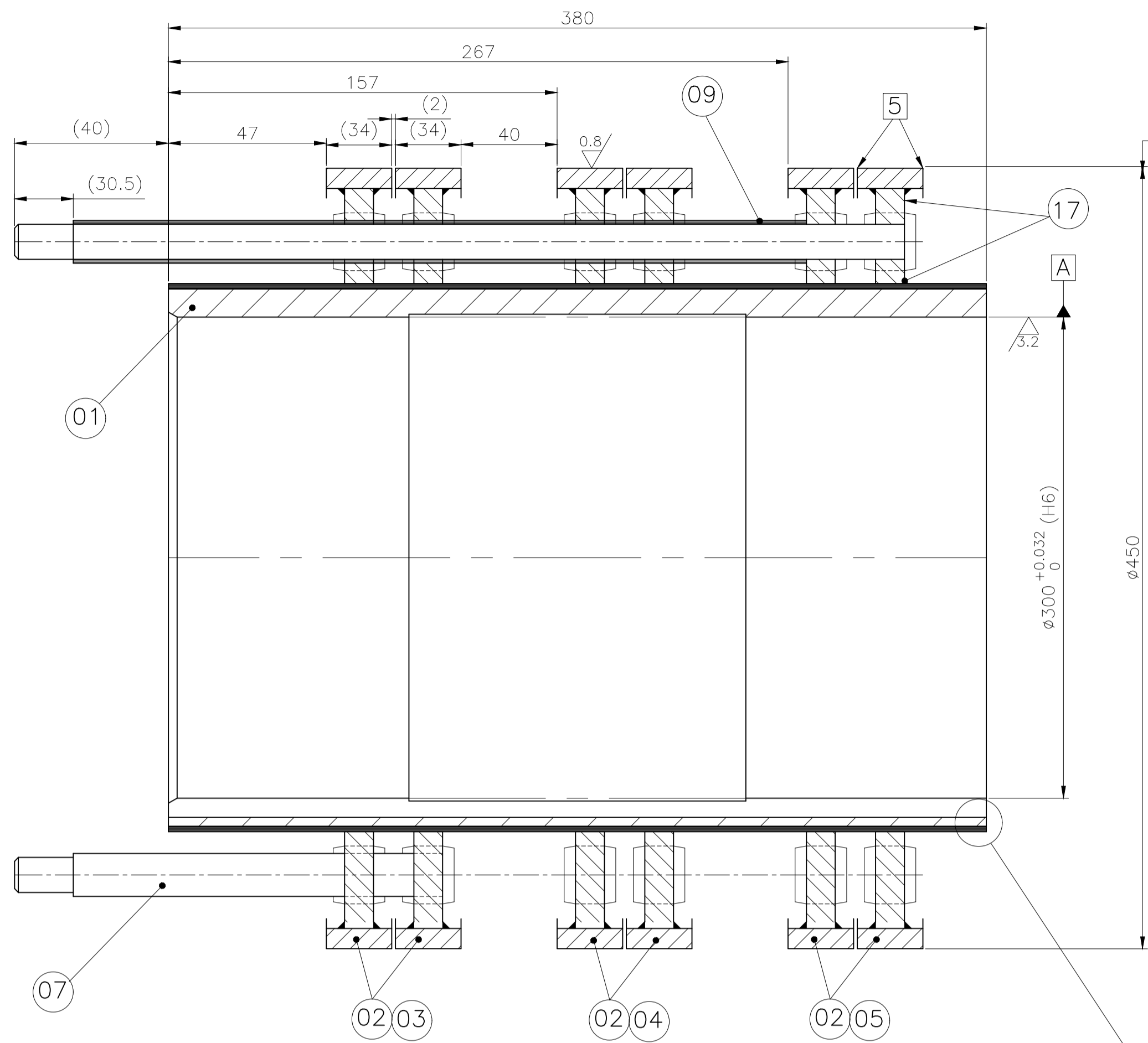


14028440062

TOOL LIST		
ITEM	TOOL	DESCRIPTION

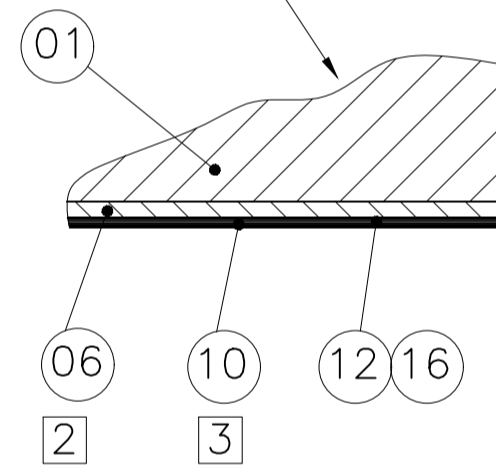
STYLE LIST	
VAR.	STYLE NO.
00	BP 9083035352



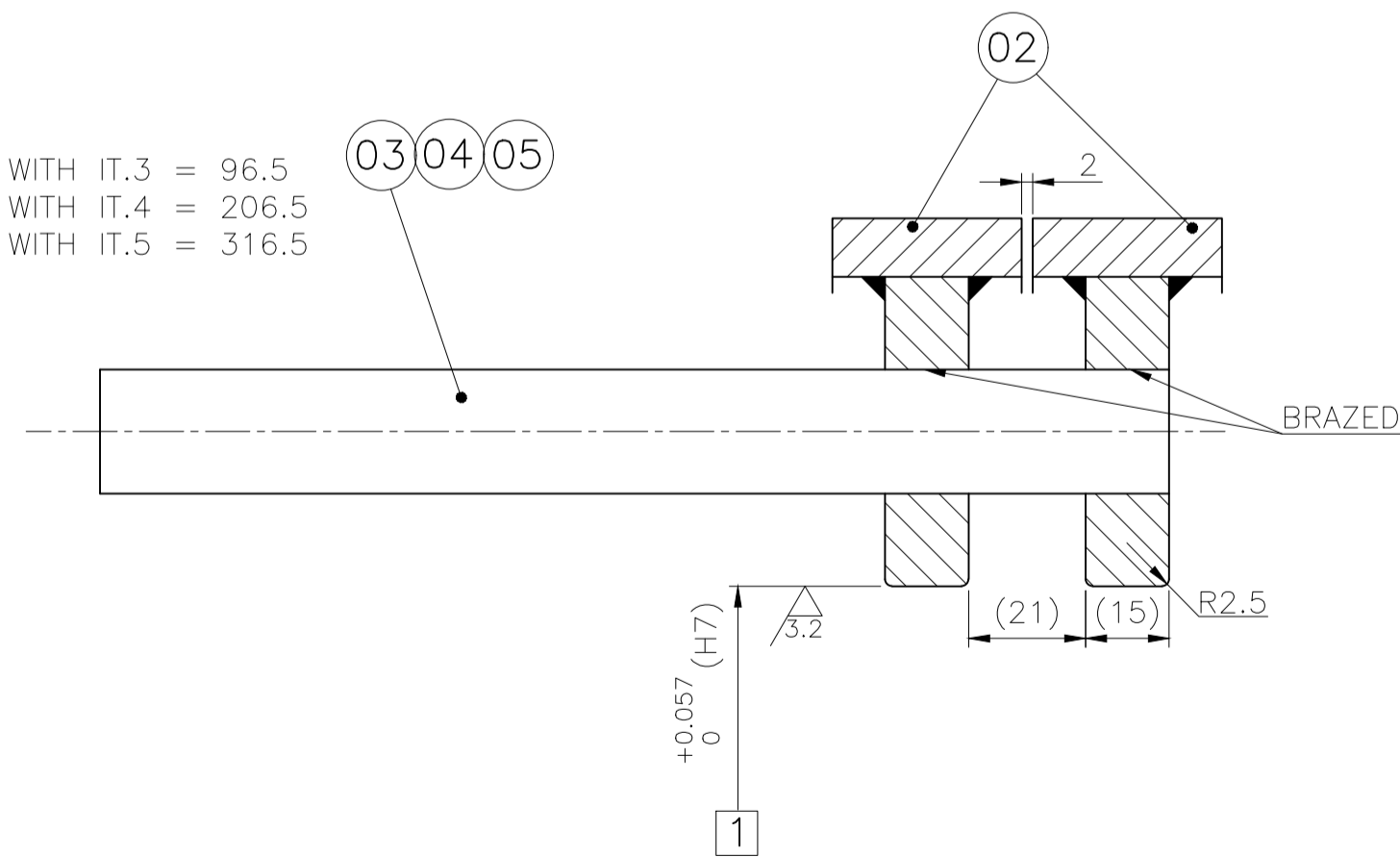
TECH. REQUIREMENTS:-

- RING INNER DIAMETER = ACTUAL ϕ ITEM 1+2 x ACTUAL TK. OF ITEM 6+2 x ACTUAL THICKNESS OF ITEM 10-SHRINK DIMENSION OF 0.5 mm.
NOMINAL VOLTAGE - 2500 V
* TEST VOLTAGE - 8500 V (AC FOR 1 MIN.)
CURRENT MAXIMUM-(1600A)
* ON EACH STUD WITH OTHER STUDS & HUB CONNECTED TO EARTH.
- ITEM 6 INNER ϕ 282 ROLLED. BUTT JOINT 2mm OPEN, JOINT EDGES DEBURRED.
- JOINT OF ITEM 10 ARE STAGGERED AGAINST EACH OTHER BY APPROX 90°.
- HERE RADIALLY ABOVE THE BOLT NUMBER OF THE CORRESPONDING SLIPRING IS STAMPED.
- EDGES ROUNDED AND SLITS IN SLIPRINGS DEBURRED.
- FOR BRAZING REF. TEX/393123.
- IR (1MIN.) BEFORE & AFTER HV TEST = MIN. 50 Mega-ohm.
- REFER QA PLAN BHEL/QA/MT/MOTORS-STD 318 FOR OTHER TECHNICAL & INSPECTION REQUIREMENTS.
- SILICON ADHESIVE/SEALANT (ANABOND 669 OR SIMILAR) TO BE APPLIED PROPERLY BETWEEN STUD INSULATION SLEEVE (ITEM NO. 8 & 9) AND PASSING HOLES OF SLIPRINGS.

SECTION A-B



IT.2 WITH IT.3 = 96.5
IT.2 WITH IT.4 = 206.5
IT.2 WITH IT.5 = 316.5



AS REQD.	AS REQD.	ITEM NO.	DESCRIPTION	STANDARD	DRAWING NO.	MATL. CODE	MATL. SPECN.	UNIT	QTY.	UNIT WT.	NO. OF ITEMS
17	INSULATION VARNISH	IN. SK 30156		ISL 897							
16	EPOXY RESIN			Pr.S 7025							
15	-										
14	INSULATION 0.5			AA22415							
13	INSULATION 0.48			BP25296							
12	INSULATION 0.09x30			AA25611							
11	-										
10	INSULATION	IN.S 4601									
09	INSULATION SLEEVE	44028446002	01	BP9063026471							
08	INSULATION SLEEVE	44028446002	01	BP9063026471							
07	INSULATION SLEEVE	44028446002	01	BP9063026471							
06	STEEL COVERING			AA1011715112						5.2	
05	SLIPRING STUD			AA10115						0.75	
04	SLIPRING STUD			AA12026						0.53	
03	SLIPRING STUD			AA12026						0.3	
02	SLIPRING ASSEMBLY	24028440049	00							9.00	
01	SLIPRING HUB	34028440048	00							60.00	

NAME	ISE	TEX(PLM)	HRP	ADDITION INFORMATION	TYPE OF PRODUCT
				STANDARD	OR
				STATUS OF DRAWING	NAME OF CUSTOMER/PROJECT
				DISTRIBUTION OF PRINT	STANDARD
				AME -1 TEX(PLM) -1	
				PLM -3	
				CIM -4	

REV	DATE	ALTERED	CHECKED	APPROVED	REV	DATE	ALTERED	CHECKED	APPROVED	REV	DATE	ALTERED	CHECKED	APPROVED	REV	DATE	ALTERED	CHECKED	APPROVED	REV	DATE	ALTERED	CHECKED	APPROVED
05	31.10.19	RV			04	14.02.08				03	24.12.08				02	23.8.07				01	19.10.07			

ZONE	REV.	DATE	DESCRIPTION
1	01		T.R. 9 ADDED.
2	01		STYLE LIST ADDED.
3	01		DRG. UPDATED & REDRAWN.
4	01		KEYWAY ADDED IN DRG.
5	01		T.R. 1 UPDATED
6	01		T.R. 7 & 8 ADDED.

DEPT.	GRADE OF UNTOL.	SCALE	WEIGHT (kg)	REF. TO ASSY. DRG.	ITEM NO.	NO. OF ITEMS
AME		NTS	130.00			

TITLE	DRAWING NO.	SHEET NO.	NO. OF SHEET
SLIPRING ASSY. (M/C)	14028440062	01	01

THE INFORMATION ON THIS DOCUMENT IS THE PROPERTY OF BHARAT HEAVY ELECTRICALS LIMITED. IT MUST NOT BE USED DIRECTLY OR INDIRECTLY IN ANY WAY DETRIMENTAL TO THE INTEREST OF THE COMPANY.

2D6.1680-259987
REF. DRG. NO.

SIGN. & DATE

ACC. NO. 3040186
INVENTORY NO.

RFB/14028440062